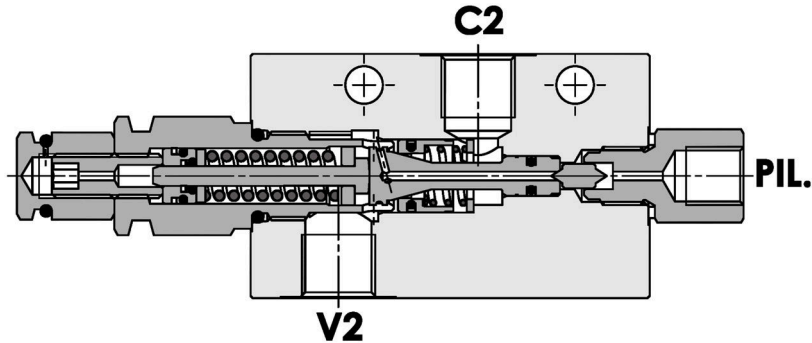
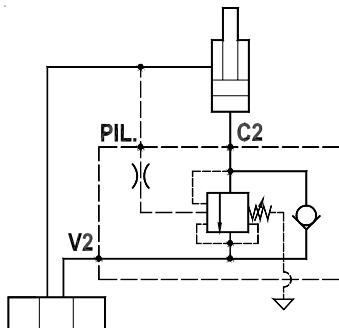




**Valvola overcenter singola parzialmente bilanciata, montaggio in linea**  
**Partially balanced single overcenter valve, line mounted**

Rev.03-2010/08



**SPECIFICHE TECNICHE**

**Materiali:** corpo in acciaio zincato. I componenti interni sono in acciaio trattato termicamente.

**Portata:** fino a 50 l/min

**Taratura max.:** 350 bar

**Rapporto di pilotaggio:** 1 : 4.25 (a richiesta 1 : 8, 1 : 11)

**Regolazione pressione:** mediante vite

**Campo di regolazione pressione:** vedere pag. 02

**TECHNICAL SPECIFICATIONS**

**Materials:** body is steel made zinc plated. Internal parts are in hardened steel.

**Rated flow:** up to 50 l/min

**Max. setting:** 350 bar

**Pilot ratio:** 1 : 4.25 (1 : 8 and 1 : 11 on request)

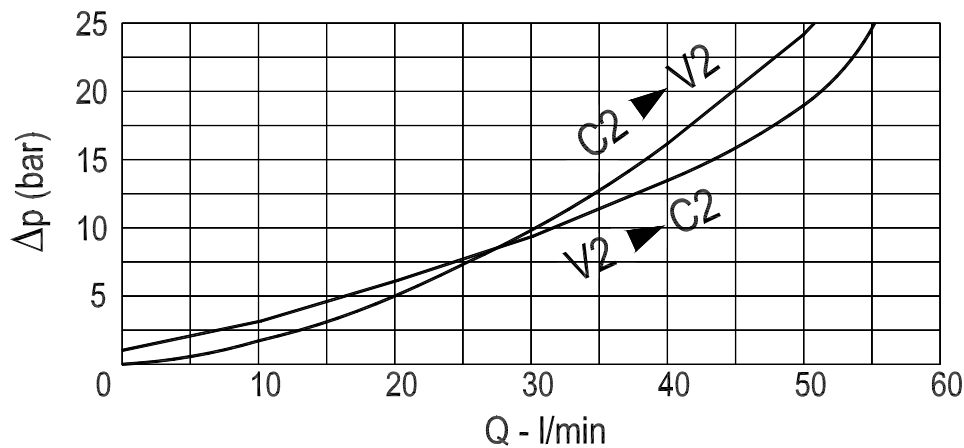
**Adjustment means:** leakproof screw adjustment

**Adjustable pressure range:** see page 02

**DIAGRAMMA PERDITE DI CARICO - PRESSURE DROP CURVES**

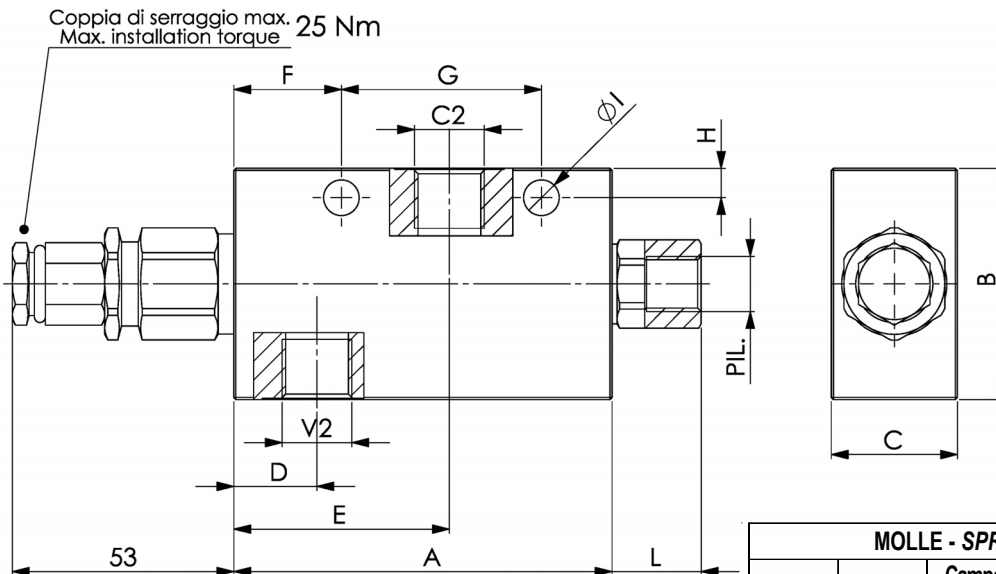
Viscosità olio 24 mm<sup>2</sup>/sec. (3,5 °E)  
 Temperatura 50 °C

Oil viscosity 24 mm<sup>2</sup>/sec. (3,5 °E)  
 Temperature 50 °C



**Valvola overcenter singola parzialmente bilanciata, montaggio in linea**  
**Partially balanced single overcenter valve, line mounted**

Rev.03-2010/08



| MOLLE - SPRINGS |                           |  |   | *   |
|-----------------|---------------------------|--|---|---|
| Codice<br>Code  | Rapp. pil.<br>Pilot ratio | Campo taratura<br>min.-max. bar<br>Adjustable<br>pressure<br>range bar | Increment. press.<br>bar/giro vite<br>Pressure<br>increase<br>bar/tum | Taratura<br>standard bar<br>Standard<br>setting bar |
| <b>20</b>       | 1 : 4.25                  | 60 - 210   | 70  | 170   |
|                 | 1 : 8                     | 60 - 220   | 50  |   |
|                 | 1 : 11                    | 60 - 250   | 90  |   |
| <b>35</b>       | 1 : 4.25                  | 80 - 350   | 120   | 280   |
|                 | 1 : 8                     | 100 - 350  | 85  |   |
|                 | 1 : 11                    | 80 - 350   | 150   |   |

| TIPO<br>TYPE     | V2-C2 | PIL. | A  | B  | C  | D    | E  | F    | G    | H  | I   | PESO<br>WEIGHT |
|------------------|-------|------|----|----|----|------|----|------|------|----|-----|----------------|
|                  | BSPP  | BSPP | mm | mm | mm | mm   | mm | mm   | mm   | mm | mm  | Kg             |
| FPOB-50-S-1/4"-L | 1/4"  | 1/4" | 90 | 55 | 30 | 19,5 | 51 | 25,6 | 47,6 | 11 | 8,5 | 1.020          |
| FPOB-50-S-3/8"-L | 3/8"  | 1/4" | 90 | 55 | 30 | 19,5 | 51 | 25,6 | 47,6 | 11 | 8,5 | 1.020          |
| FPOB-50-S-1/2"-L | 1/2"  | 1/4" | 90 | 65 | 35 | 19,5 | 51 | 25,6 | 47,6 | 11 | 8,5 | 1.450          |

**ESEMPIO DI ORDINAZIONE - ORDERING CODE EXAMPLE**

**F P O B** **5 0** **S** **1 / 4** **L** **2 0** **B** **\***

1/4 - 1/4" BSPP  
 \* 3/8 - 3/8" BSPP  
 1/2 - 1/2" BSPP  
 Connessioni - Port sizes

\* "20" / "35":  
 Campi di taratura pressione - Adjustable pressure

Guarnizioni - Seals:  
 V=Viton \*  
 Omettere se BUNA-N - Omit if BUNA-N

Rapporto di pilotaggio - Pilot ratio  
 Omettere se standard - Omit if standard \*  
 B = 1 : 8, C = 1 : 11